

## COVID-19 Risk Assessment

Risk Assessment for: Residential Camps			
Name: Tessa Woodrow		Organisation: Youth Adventure Trust	
Assessment undertaken:	Signed: 	Date: 15/07/21	<b>Review Date:</b> Constant review in line with the National Youth Agency guidance and government advice and regulations

Hazards	Who is at risk	Control measures	Review Date
Someone already infected with COVID-19 attending a residential camp and transmitting the virus	Staff, young people, volunteers and providers	<ul style="list-style-type: none"> <li>In advance of attending any activity all young people, staff, volunteers and providers will be asked to complete a health questionnaire to ask if anyone in their household has COVID-19 symptoms and, if they do, ask that they do not attend. Volunteer Manager to text all camp volunteers the day before camp with the health questionnaire. Programme Manager to contact young people and providers.</li> <li>In advance of the camps parents and young people will be asked to read through and adhere to YAT's COVID-19 Action Plan and Risk Assessment which YAT staff will send via text link or hard copy</li> <li>As per NYA / Government regulations all attendees will be required to take a Lateral Flow Test (LFT) on the morning of departure and must have a negative result to attend. NB they will also be required to take a test at the midpoint and on the day of departure.</li> <li>Staff will take a PCR test 2 days before camps and LFTs during and between camps</li> </ul> <p>Young people, volunteers, providers and staff will be told not to attend if they:</p> <ol style="list-style-type: none"> <li>Receive a positive LFT result</li> <li>Are experiencing any COVID-19 symptoms</li> <li>Are self-isolating as a result of COVID-19 symptoms or sharing a household or support bubble with somebody with symptoms</li> <li>Have been advised by the NHS Test and Trace service that they should self-isolate</li> </ol>	Constant review in line with the National Youth Agency guidance and government advice and regulations

<p>Transmission of COVID-19 during transport to and during the camp.</p>	<p>Staff, young people, volunteers and transport providers</p>	<ul style="list-style-type: none"> <li>● Young people will be transported to the designated coach pick up point by members of their household wherever possible</li> <li>● YAT will use larger coaches than needed allowing additional social distancing space</li> <li>● Young people can be transported in a taxi, coach, minibus or shared vehicle under the following guidelines;             <ol style="list-style-type: none"> <li>1. A face covering must be worn for the entirety of the journey</li> <li>2. Hands must be washed or sanitised before entering and on leaving the vehicle</li> <li>3. There should be no eating, loud talking or singing whilst in the vehicle.</li> </ol> </li> <li>● Upon arrival/departure all attendees must wash their hands or use hand sanitiser</li> <li>● Minibuses will be cleaned and sanitised after each group has departed</li> </ul>	<p>Constant review in line with the National Youth Agency guidance and government advice and regulations</p>
<p>Transmission of COVID-19 whilst sleeping in tents</p>	<p>Staff, young people and volunteers</p>	<ul style="list-style-type: none"> <li>● Young people will stay in tent bubbles with same sex members of their colour camp group</li> <li>● Tents will be under occupied to allow for more spacing</li> <li>● Hand sanitiser will be available for young people going into and coming out of their tent</li> <li>● Sleeping equipment will be in quarantine before the camp and will be washed/sanitised after camp</li> <li>● Tent doors will be opened as much as possible (weather dependant) throughout the camp and in between camps</li> <li>● Volunteers will have their own individual tent and keep the same tent for the duration</li> <li>● Staff will have their own individual tent and will keep the same tent for the duration</li> <li>● On overnight stays or bivis away from the main campsite YP must only share their bivi with their tent bubble. Volunteers will stay by themselves.</li> <li>● Hand sanitiser and cleaning products will be available on bivis</li> </ul>	<p>Constant review in line with the National Youth Agency guidance and government advice and regulations</p>

<p>Transmitting/Contracting of COVID-19 during an activity session</p>	<p>Staff, young people, volunteers and providers</p>	<ul style="list-style-type: none"> <li>● Young people and volunteers will be divided into 'bubbles' and remain in that group for the duration of the activity. They will not mix with any other bubbles. Members of each bubble will keep contact to a minimum.</li> <li>● Activities will be delivered outdoors wherever possible. Indoor spaces will be prepared for use in a COVID responsible way in line with NYA guidance.</li> <li>● All activities and venues will be individually risk assessed and additional control measures will be put in place where necessary. YAT staff will work with external facilitators to share risk assessment procedures and ensure cohesiveness.</li> <li>● Risk assessment procedures will be sent to volunteers, young people, parents and staff in advance of the day with the requirement to adhere to them.</li> <li>● Risk assessment procedures will be clearly explained by staff to young people and volunteers on their arrival at the start of the camp, and with reminders throughout the camp.</li> <li>● In addition activity provider risk assessment protocols and measures will be followed</li> </ul>	<p>Constant review in line with the National Youth Agency guidance and government advice and regulations</p>
--	--	---	--

<p>Transmitting/Contracting of COVID-19 due to poor hygiene</p>	<p>Staff, young people, volunteers and providers</p>	<ul style="list-style-type: none"> <li>● There will be increased frequency of handwashing</li> <li>● Where handwashing facilities are not available, hand sanitiser will be provided</li> <li>● Additional hand sanitising stations will be available around the campsite and young people, staff and volunteers will be encouraged to use these</li> <li>● Attendees will be advised they must wash hands thoroughly for 20 seconds with soap and running water, or use hand sanitiser, before arrival, on departure, before and after using the toilet facilities and before and after eating</li> <li>● Staff will provide regular reminders and/or signage to maintain hygiene standards</li> <li>● There will be clear usage guidance for toilets to ensure they are kept clean and that distancing is achieved as much as possible</li> <li>● After each group has used the shower facilities YAT staff will sanitise surfaces, door handles and cubicles before the next group uses the facilities</li> </ul> <p>Attendees will be asked to:</p> <ul style="list-style-type: none"> <li>● Catch any cough or sneeze and dispose of used tissues in the bins provided</li> <li>● Wash their hands thoroughly after they have handled tissues or sneezed/coughed</li> <li>● Avoid touching their eyes, nose, and mouth</li> </ul>	<p>Constant review in line with the National Youth Agency guidance and government advice and regulations</p>
---	--	--	--

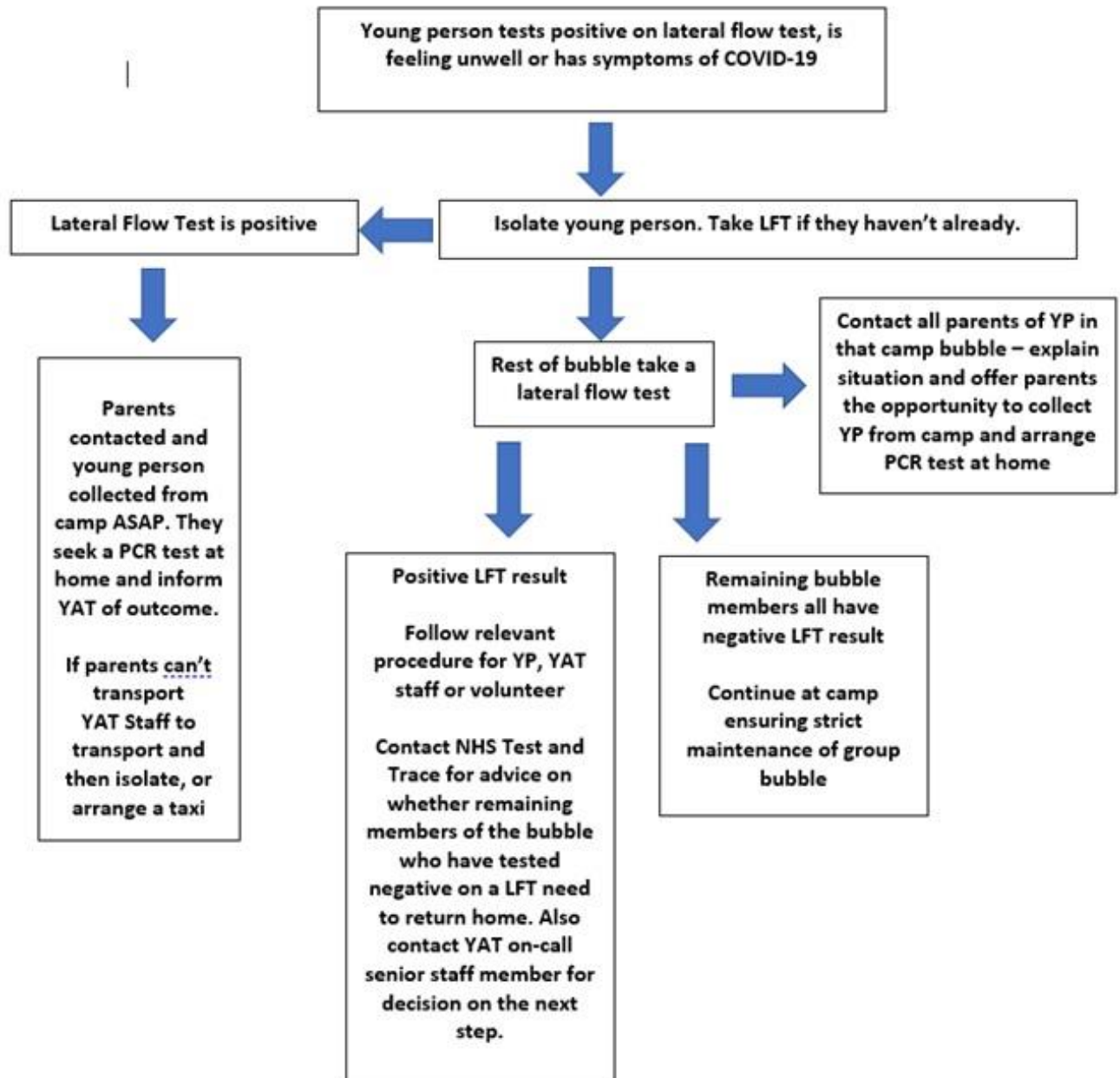
<p>Transmitting/Contracting of COVID-19 due to lack of cleaning or use of shared facilities</p>	<p>Staff, young people, volunteers and providers</p>	<ul style="list-style-type: none"> <li>● Activities will take place outdoors wherever possible and when it is safe to do so</li> <li>● Staff will come equipped with appropriate cleaning materials to clean surfaces</li> <li>● Equipment sharing will be avoided wherever possible, and where equipment must be shared, hand sanitiser must be used before and after handling. Appropriate products will be used to clean the items.</li> <li>● Shared spaces will be cleaned thoroughly between use if different bubbles are to use them</li> <li>● There will be increased cleaning routines including enhanced regular cleaning of commonly used surfaces, such as equipment and door handles</li> <li>● The number of users in the toilet area at any one time will be limited to their colour group only. Hand sanitiser must be used on entry and exit.</li> <li>● We will restrict the use of any toilets or shower facilities that the public have access to.</li> </ul>	<p>Constant review in line with the National Youth Agency guidance and government advice and regulations</p>
<p>Transmitting/Contracting of COVID-19 inside a venue</p>	<p>Staff, young people, volunteers and providers</p>	<ul style="list-style-type: none"> <li>● Activities will take place outdoors wherever possible and when it is safe to do so.</li> <li>● Indoor venues will only be used that are large enough to accommodate the bubble size and windows/ doors will be opened to allow better ventilation wherever possible</li> <li>● If appropriate distancing and ventilation is not possible, face masks will be required to be worn</li> <li>● Shared spaces will be cleaned thoroughly between use if different bubbles are to use them</li> <li>● There will be increased cleaning routines including enhanced regular cleaning of commonly used surfaces, such as equipment and door handles</li> <li>● The number of users in the toilet area at any one time will be limited. Hand sanitiser must be used on entry and exit.</li> </ul>	<p>Constant review in line with the National Youth Agency guidance and government advice and regulations</p>

<p>Transmitting/Contracting of COVID-19 in the wider community</p>	<p>Wider community</p>	<ul style="list-style-type: none"> <li>● In order to support the NHS Test and Trace system to prevent the further spread of COVID-19 the Youth Adventure Trust will capture the following information for all young people, staff, volunteers and providers in attendance at any activity:</li> </ul> <ol style="list-style-type: none"> <li>1. Name</li> <li>2. Phone number of next of kin, or the individual if over 16</li> <li>3. Email address for next of kin, or the individual if over 16</li> <li>4. Date and time of entrance and exit</li> </ol>	<p>Constant review in line with any update to government advice and regulations</p>
<p>Transmitting/Contracting of COVID-19 by a member of public accessing the venue</p>	<p>Staff, young people, volunteers, providers and public</p>	<p>Where a venue we use is open to the public;</p> <ul style="list-style-type: none"> <li>● We will ensure that members of the public keep a safe distance from our staff, young people and providers at all times.</li> <li>● Remain aware of other visitors to the site and mitigate the potential for them to interact with our group.</li> <li>● Ensuring young people, staff and volunteers wear a face mask when using an indoor public space</li> </ul>	<p>Constant review in line with any update to government advice and regulations</p>
<p>Risk of transmission of COVID-19 when dealing with a sick or injured young person, volunteer or staff member</p>	<p>Staff, young people, volunteers and providers</p>	<ul style="list-style-type: none"> <li>● First aiders advised to follow HSE guidelines – keeping a safe distance for as long as possible.</li> <li>● First aid kits now include additional PPE and these items should be used when treating any person during this time.</li> <li>● Any used PPE or first aid equipment will be doubled bagged and disposed of in an outdoor bin.</li> <li>● Should any member of a bubble become unwell with possible COVID-19 symptoms they will be isolated from the group and carry out a LFT. If it is positive they will be required to remain isolated from the rest of the group and arrangements will be made for them to return home as a matter of urgency. On return home they will be advised to take a PCR test and contact NHS Test and Trace for further advice. If the LFT test is negative but they are displaying likely COVID-19 symptoms they will also need to return home and be advised to take a PCR test.</li> <li>● In addition if a member of the bubble tests positive other members of the bubble</li> </ul>	<p>Constant review in line with the HSE, National Youth Agency guidance and government advice and regulations</p>

		<p>including volunteers and staff will be required to take a LFT. Where it is negative they can remain at the camp and continue normal activity. If it is positive they will follow the procedure as above.</p> <p>Parents/carers will be contacted and informed of the positive LFT within their child's bubble, and given the option to remove their child from the camp if they would prefer.</p> <ul style="list-style-type: none"><li>• As per NYA / government regulations every member of the camp including young people, volunteers and staff will be required to take a LFT on the morning of departure for the camp and must have a negative result to attend. They will also need to complete a test at the midpoint and on the day of return. If during LFT testing on camp anyone tests positive they will be required to immediately isolate from the rest of the group and return home as soon as possible. They will be advised to take a PCR test and contact NHS Test and Trace for further advice.</li><li>• Where one member of a bubble tests positive on a LFT but all other individual's tests within the bubble are negative, YAT will contact NHS Test and Trace for advice on the impact for the remaining members of the bubble which will determine whether they are required to leave the camp and isolate.</li></ul>	
--	--	---	--

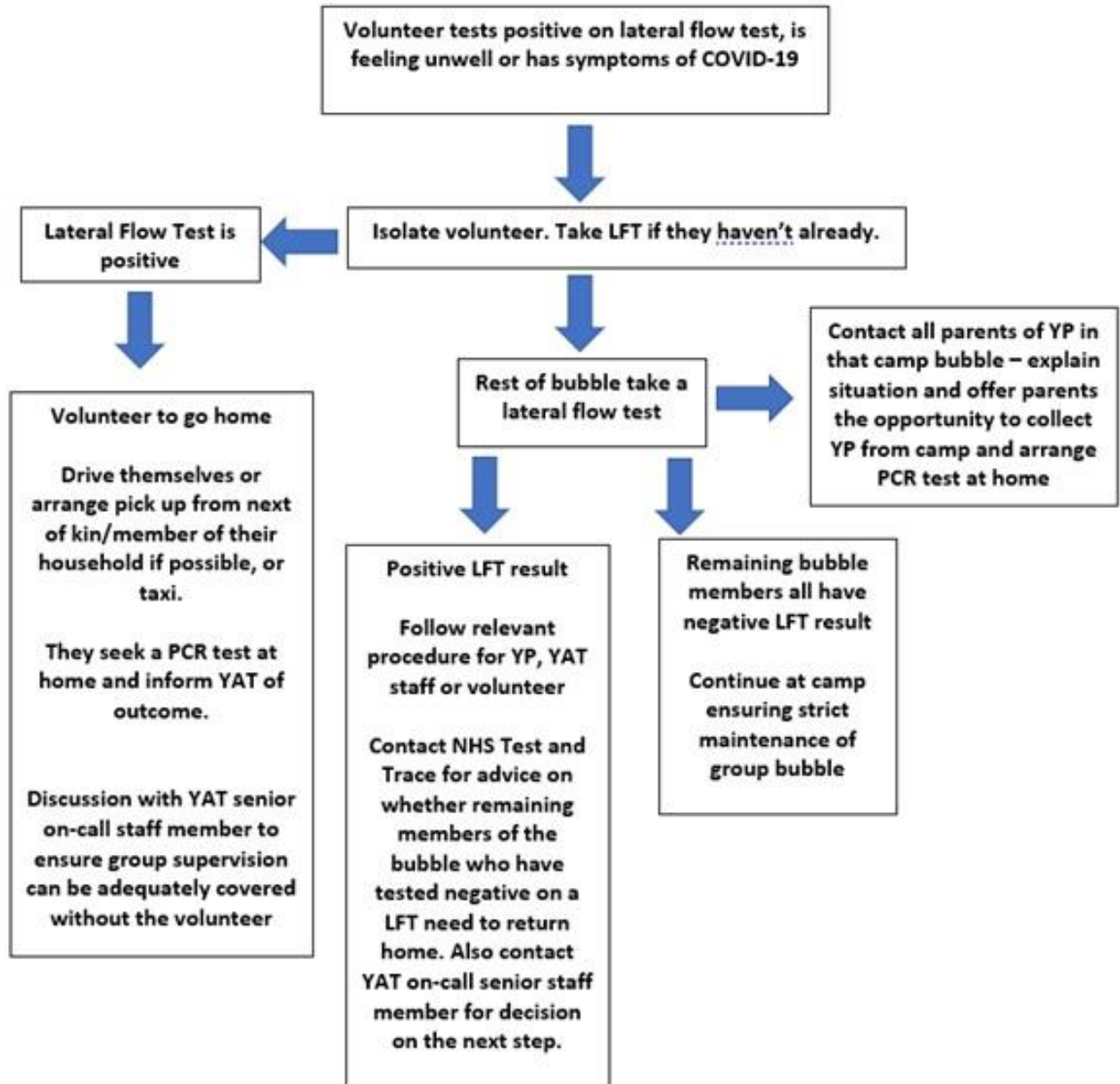
Protocol whilst on camp

## Young Person





## Volunteer



## YAT Staff

